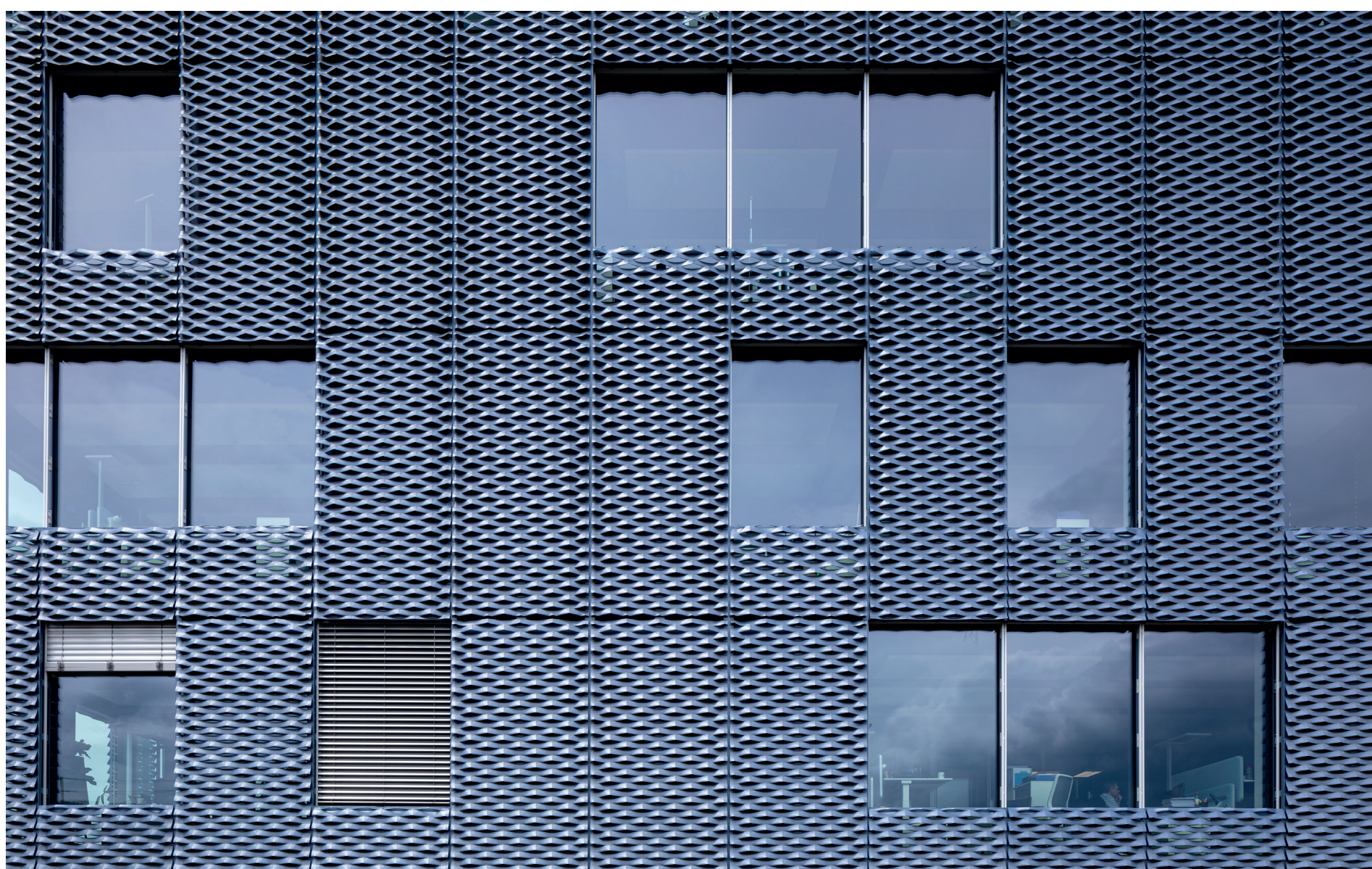


A facade with a play of light

Every aspect of the new technology centre constructed for Stöcklin Logistik AG in the Swiss town of Laufen is impressive. The architecture of the building conveys a sense of robustness and functionality, combined with an attractive design. The expanded metal panels that make up the facade have been coated in a unique colour formulated specially by KARLBUBENHOFER AG.



Projectinfo:

Project: Stöcklin Hauptsitz, Laufen
Planner: W+P Weber und Partner AG

Articles:

ArticleNr.: 14239 / 64
Articlename: PAC-140-SD QUALIBOND
Colour: 5M1290 Grauviolettblau
Properties: superdurable
Surface: smooth
Gloss: matt

Documents:

<https://www.kabe-farben.ch/en/insights>

